

## Ремонт фотоаппаратов с гарантией.

Мастерская Ремтелевид производит ремонт фотоаппаратов, цифровых зеркальных фотокамер, как от знаменитых брендов таких, как Canon, Casio, Sony, Panasonic, Nikon, Fuji, так и от менее известных фирм производителей. Ремонт фотоаппаратов производится в срок от 1 до 3 рабочих дней. В нашей мастерской работают профессиональные мастера. Наличие диагностической аппаратуры, необходимой сервисной документации повышает качество ремонта. На все виды оказанных услуг дается гарантия. Диагностика - бесплатно. Мы так же осуществляем замену дисплеев, ССД матриц, ремонт карт памяти и корпусов в фотоаппаратах. Выполняем [ремонт видеокамер](#), [игровых приставок Sony](#), [ремонт psp](#) и другой аудио теле аппаратуры.

На нашем сайте можно найти много полезной информации для пользователей, а так же [схемы](#), [сервисную документацию](#), [инструкции по ремонту различной аппаратуры](#).

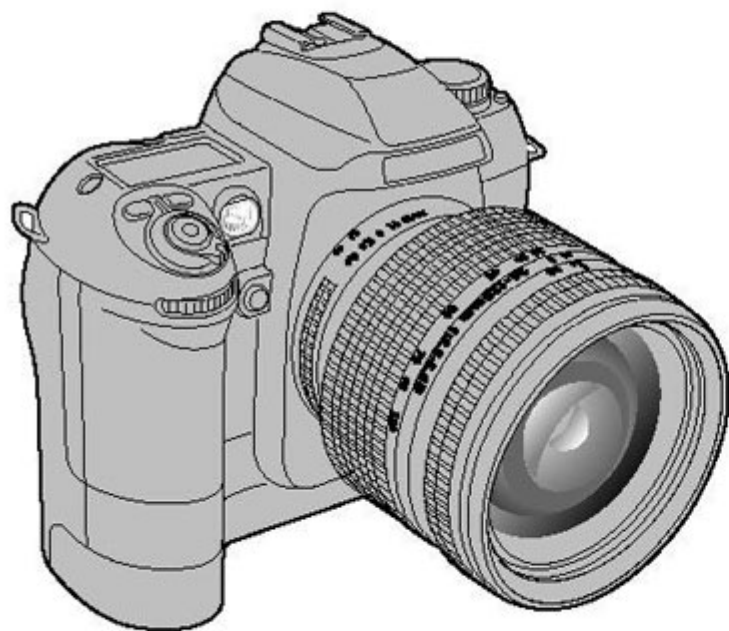
Сдать в ремонт технику можно по адресу: Москва ул. Маросейка, д. 6 (метро Китай-город) в будние дни с 11 до 20 часов, в субботу с 11 до 18 без перерыва на обед. Контактные телефоны: 518-54-93 и 8-919-775-74-55

---

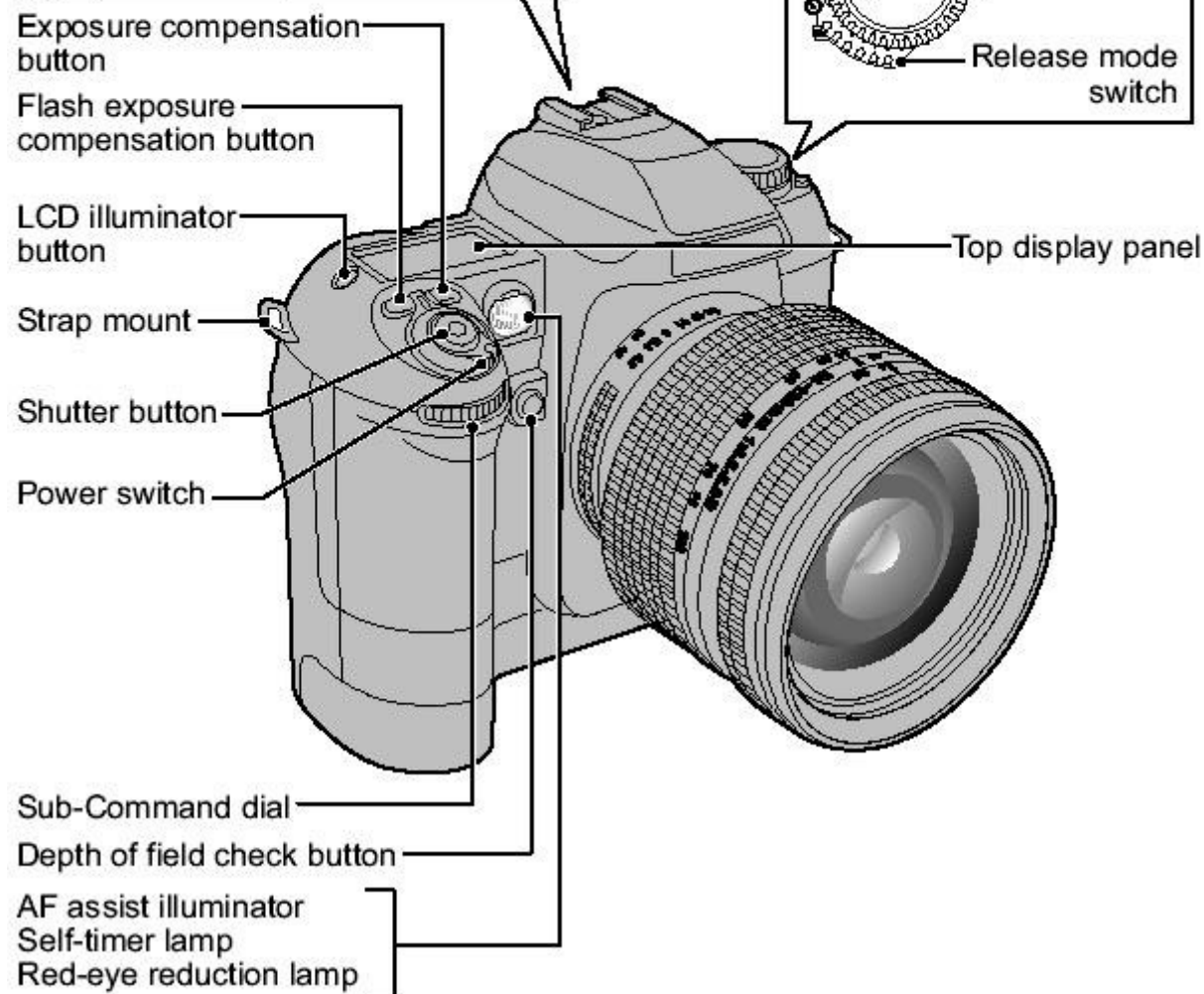
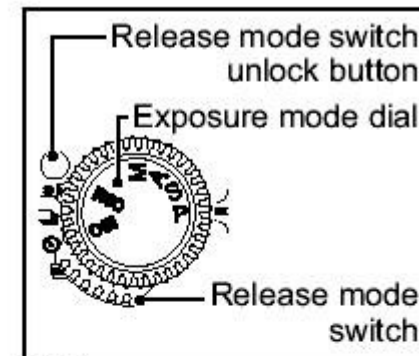
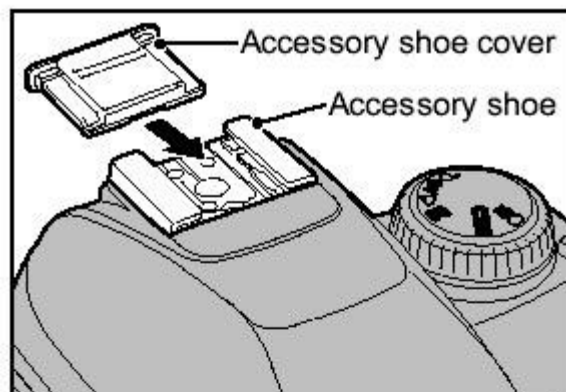


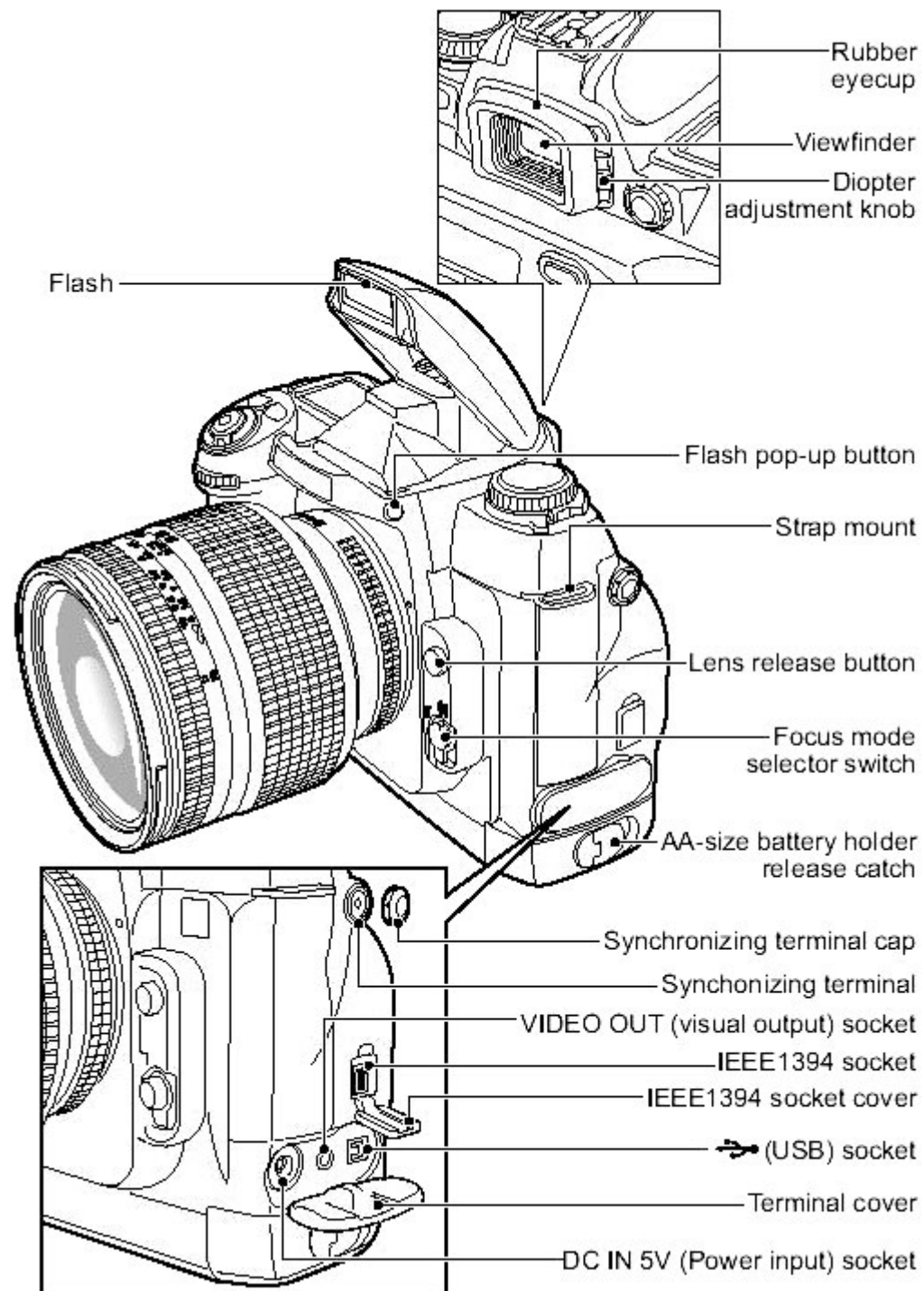
# FUJIFILM

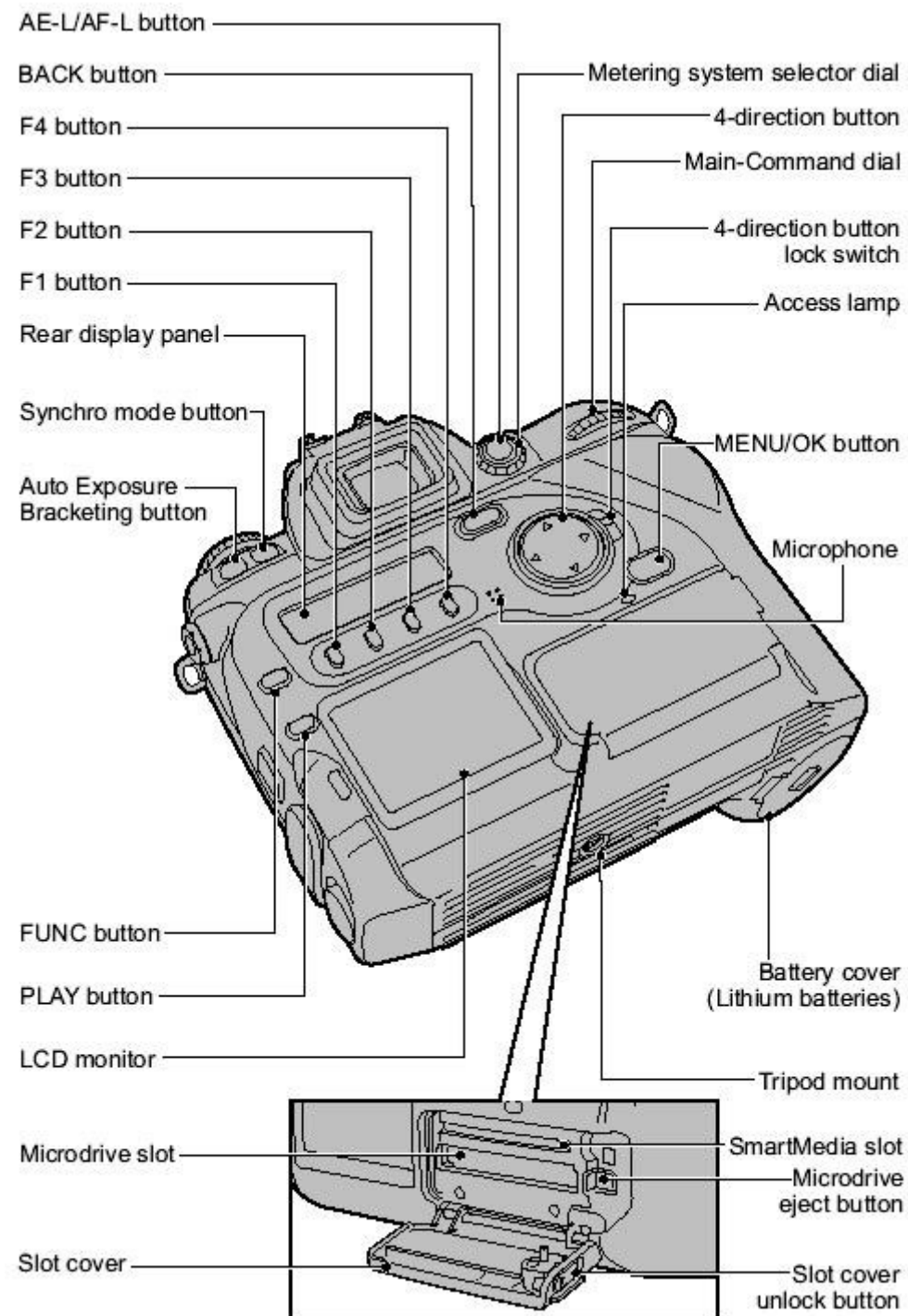
DIGITAL CAMERA



***FinePix S2 Pro***

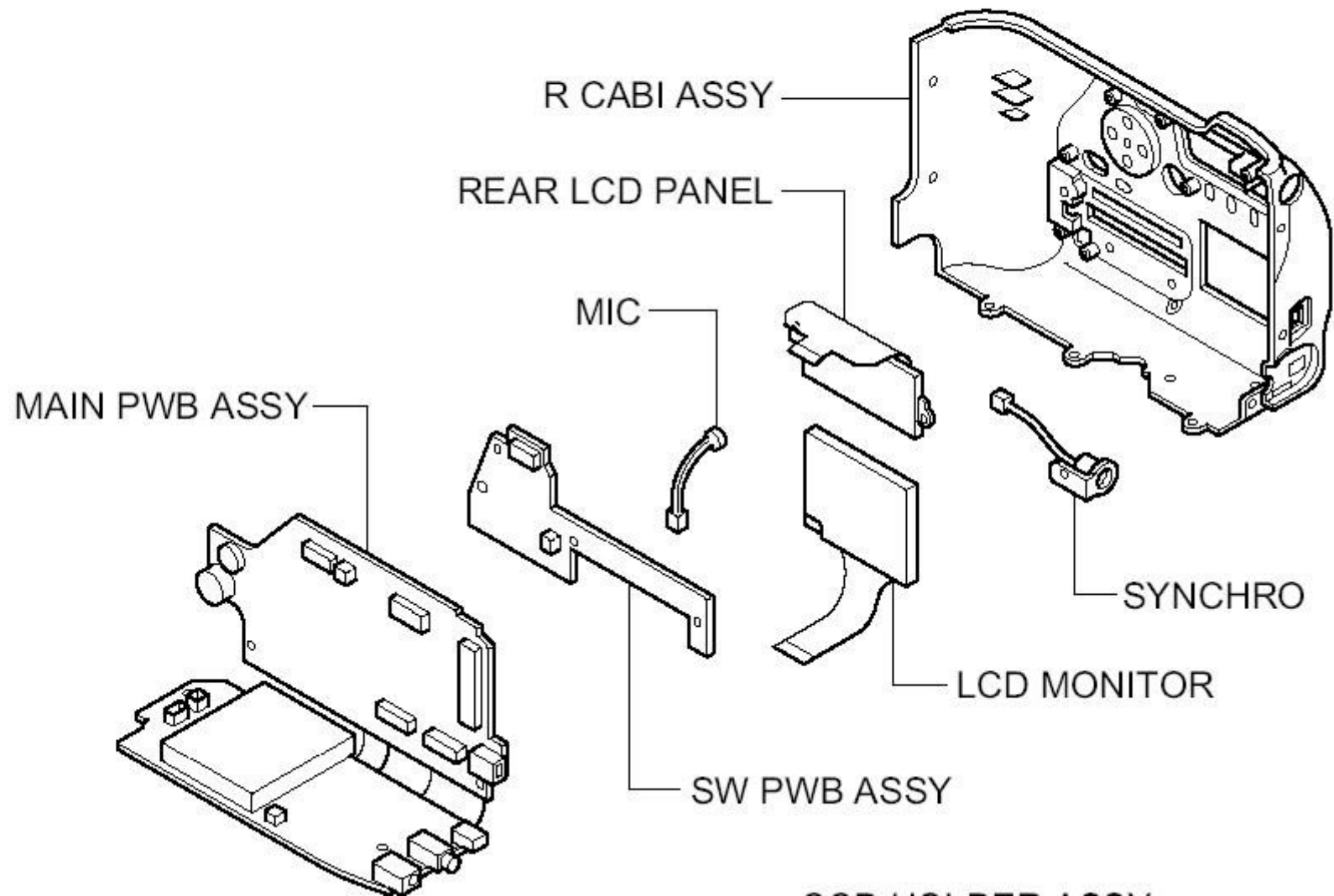


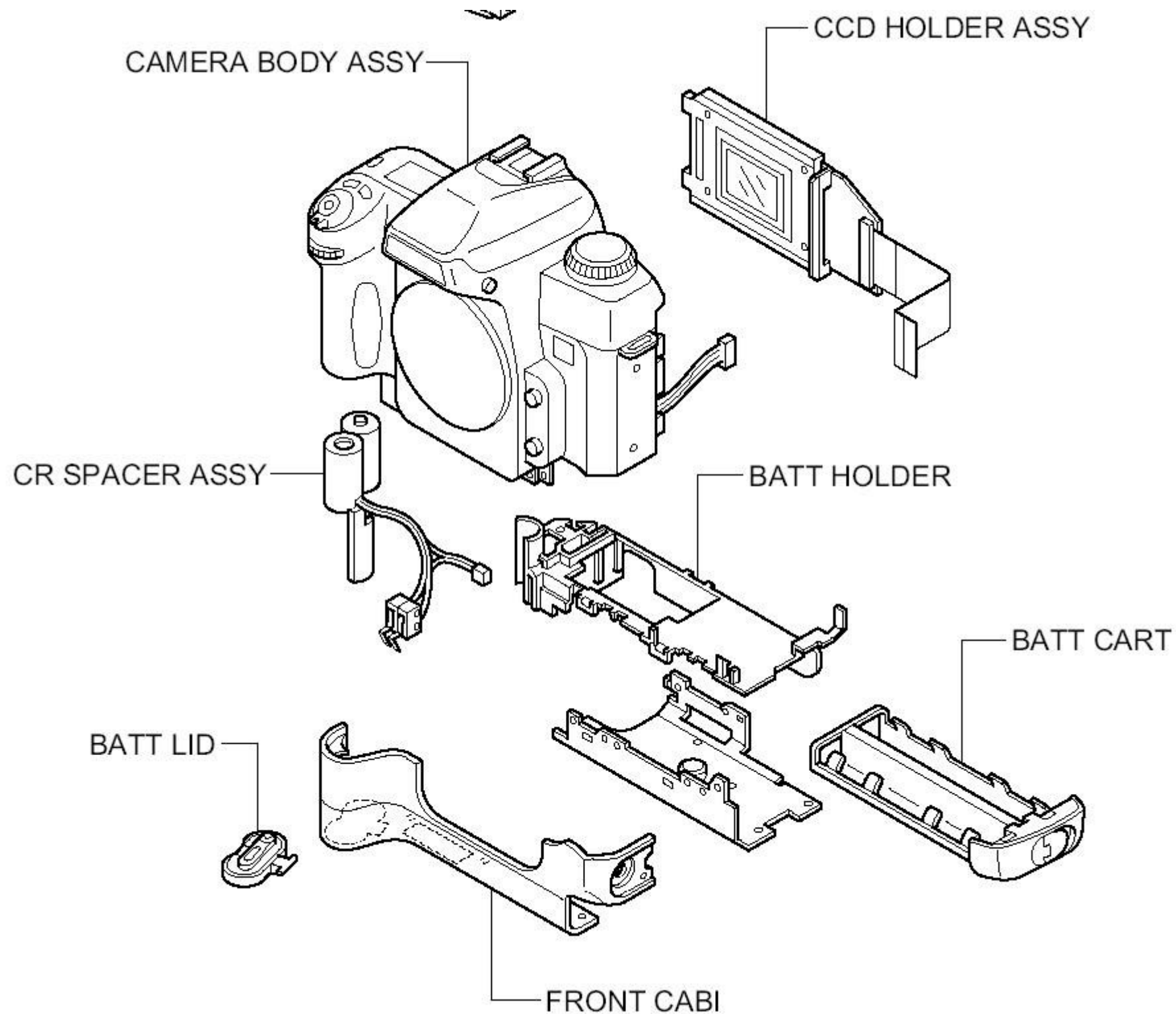




## 2. Disassembly

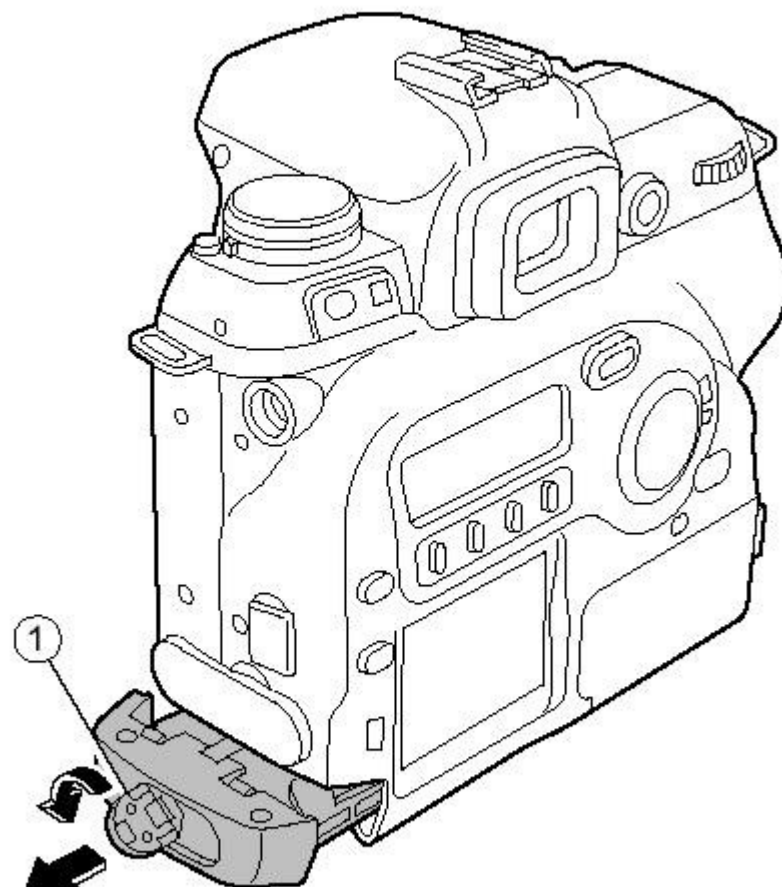
### 2-1.Names of internal Components





Remove in the order indicated by circled numbers.

<Step 1>



(1) Turn the battery holder lock lever, remove the lock, and pull out BATT CART ASSY.

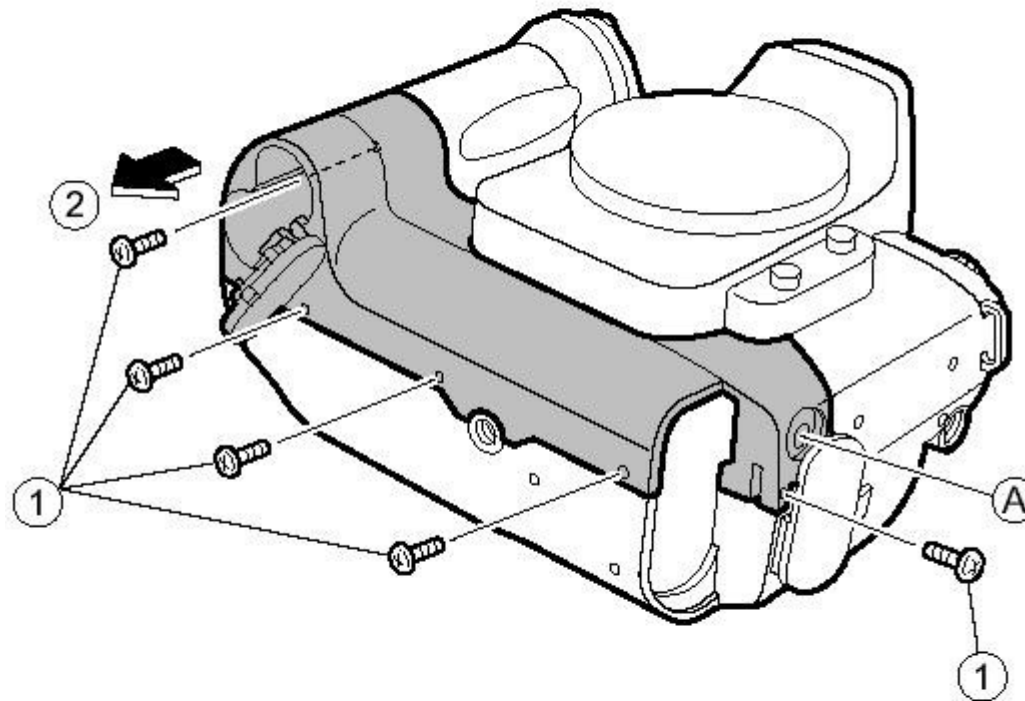


## 2-3.Removing FRONT CABI

Remove in the order indicated by circled numbers.

<Step 1>

- (1) Remove five screws(BB14857-100, M1.7x3.0).
- (2) Remove FRONT CABI in the direction of the arrow.



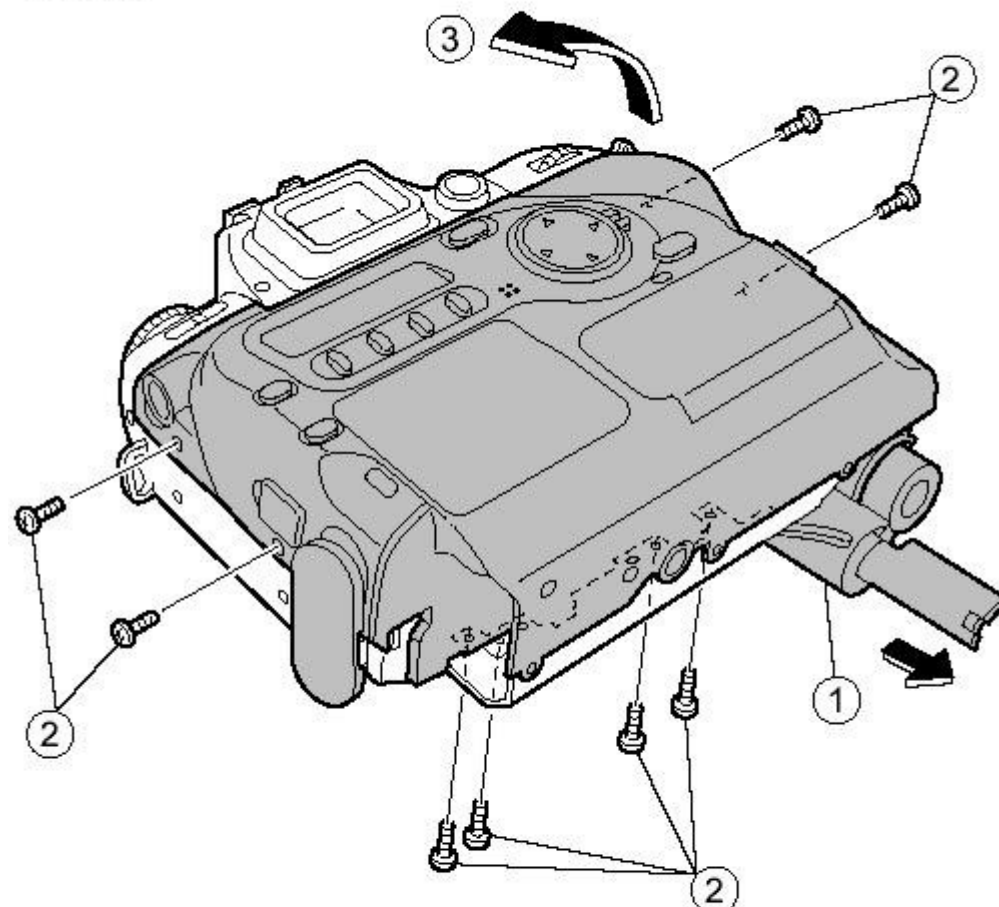
[ Notes of assembly of FRONT CABI. ]

1.A part must be engaged, and combine FRONT CABI.

2.Confirm there is no space when "FRONT CABI" and "MAIN BODY" are combined, and the screw is tightened.

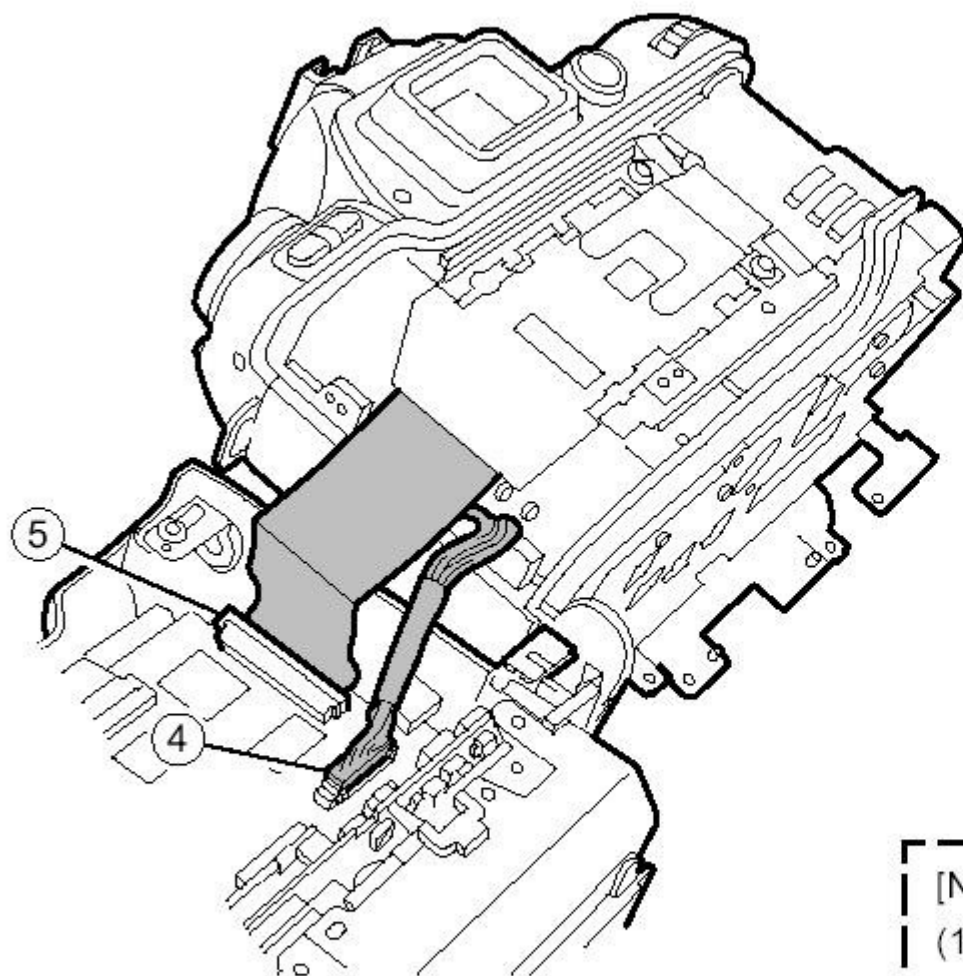
Remove in the order indicated by circled numbers.

<Step 1>



- (1) Pull out CR SPACER ASSY from the camera body in the direction of the arrow.
- (2) Remove eight screws(BB14857-100, M1.7x3.0).
- (3) Remove DSC BLOCK in the direction of the arrow.

<Step 2>



(4) Remove the harness from connector (CN300) of MAIN PWB ASSY.

(5) Remove the lock of connector (CN500) of MAIN PWB ASSY, and remove FFC.

[Notes of assembly of DSC BLOCK. ]

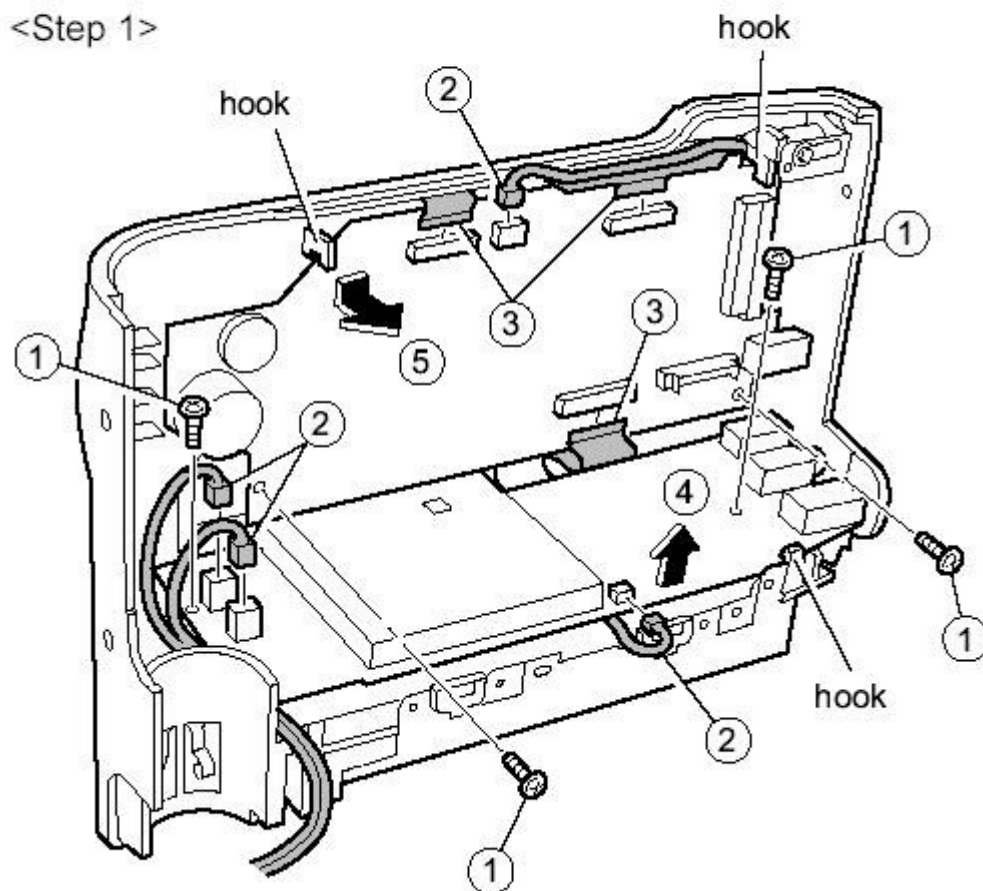
(1) Note diagonal insertion and the half insertion when you lock FFC and the harness to the connector.

(2) Confirm there is no space when "DSC BLOCK" and "MAIN BODY" are combined, and the screw is tightened.

## 2-5.Removing MAIN PWB ASSY

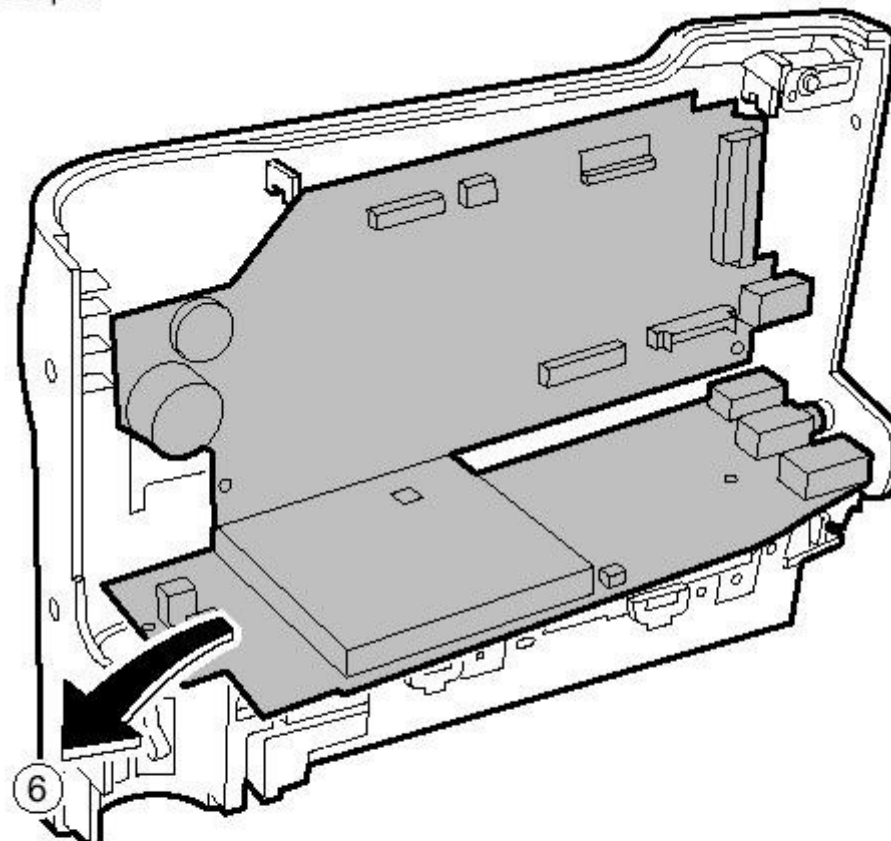
Remove in the order indicated by circled numbers.

<Step 1>



- (1) Remove four screws(BB12585-100)
- (2) Remove the harness from connector (CN700/701/702/303) of MAIN PWB ASSY.
- (3) Remove the lock of connector (CN301/302/200) of MAIN PWB ASSY, and remove FFC.
- (4) Remove the hook of BATT HOLDER, and float MAIN PWB ASSY in the direction of the arrow.
- (5) Remove the hook of R CABI ASSY, and float MAIN PWB ASSY in the direction of the arrow.

<Step 2>



(6) Remove MAIN PWB ASSY in the direction of the arrow

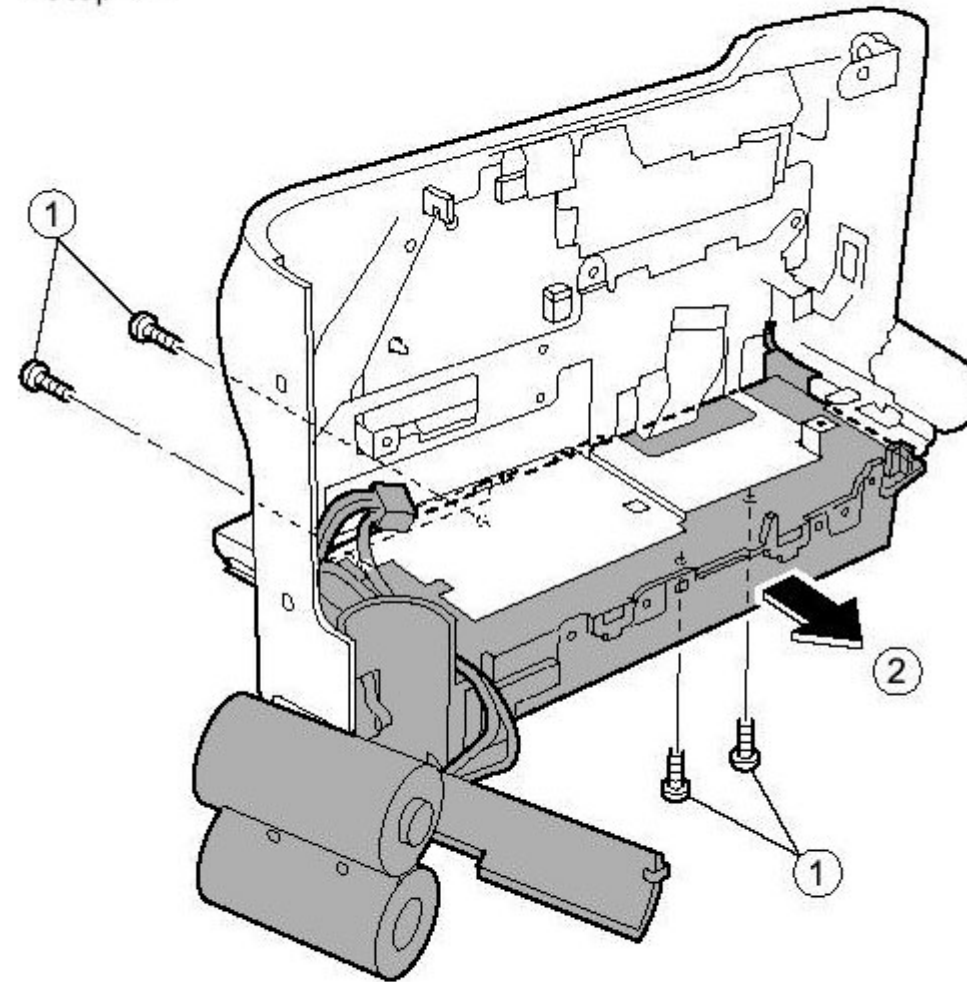
[ Notes of assembly of MAIN PWB ASSY. ]

Note diagonal insertion and the half insertion when  
you lock FFC and the harness to the connector.

## 2-6.Removing BATT HOLDER ASSY

Remove in the order indicated by circled numbers.

<Step 1>



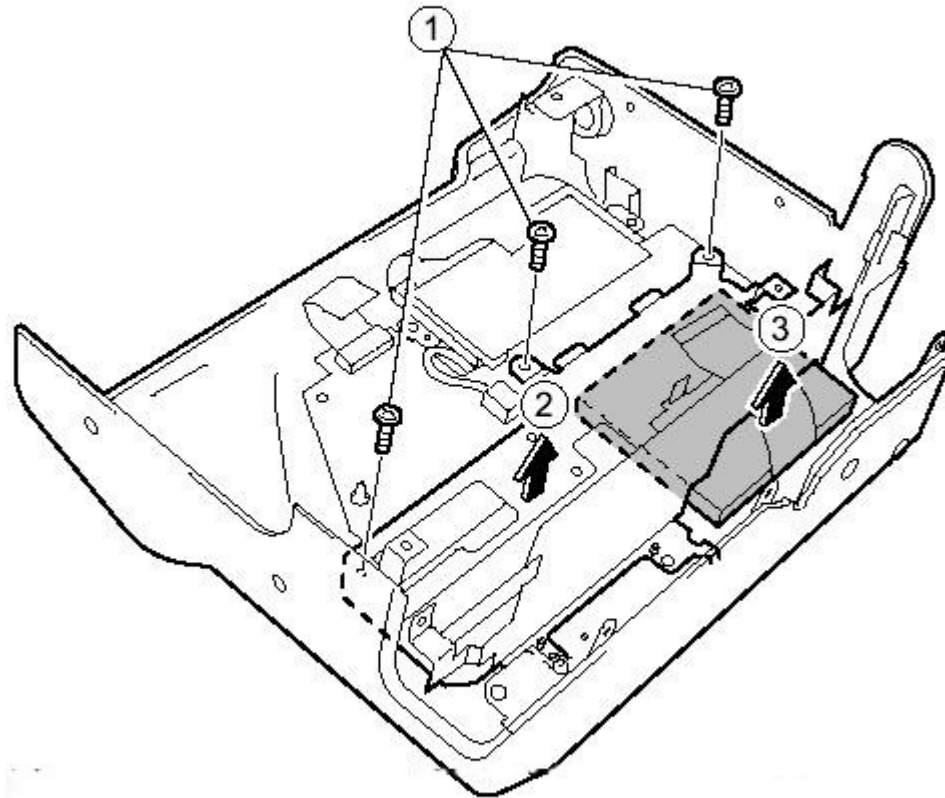
(1) Remove four screws.

(2) Remove BATT HOLDER ASSY in the direction of the arrow.

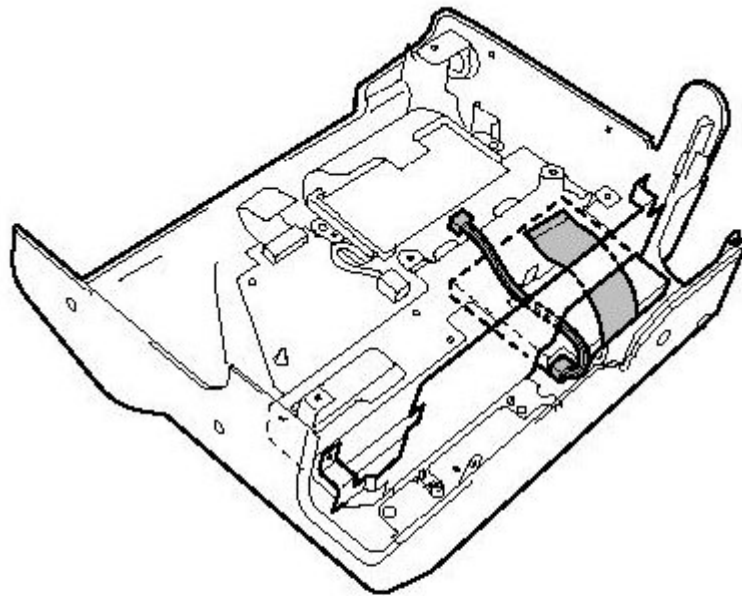
## 2-7.Removing LCD MONITOR

Remove in the order indicated by circled numbers.

<Step 1>



- (1) Remove three screws.
- (2) Remove MAIN FRAME ASSY in the direction of the arrow.
- (3) Remove LCD MONITOR in the direction of the arrow.



[ Notes of assembly of MAIN FRAME ASSY]

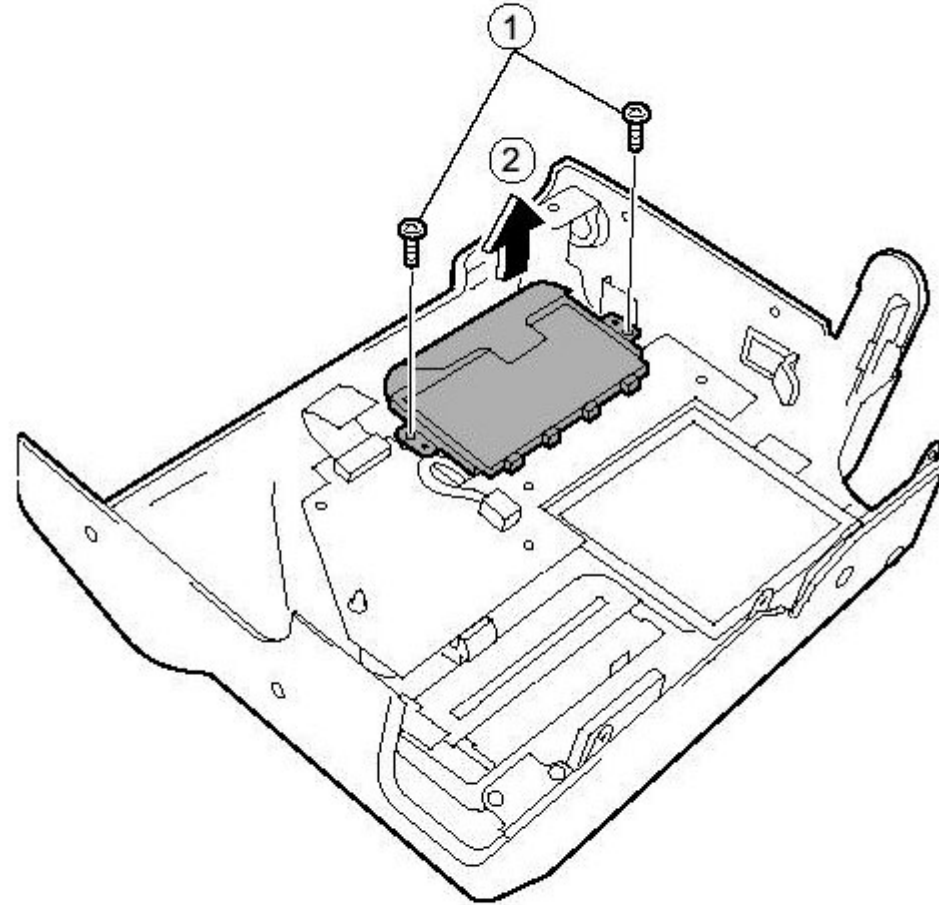
Assemble MAIN FRAME ASSY to pinch neither "FPC of LCD MONITOR" nor "FPC of back light" when you assemble MAIN FRAME ASSY.



## 2-8. Removing REAR DISPLAY PANEL

Remove in the order indicated by circled numbers.

<Step 1>

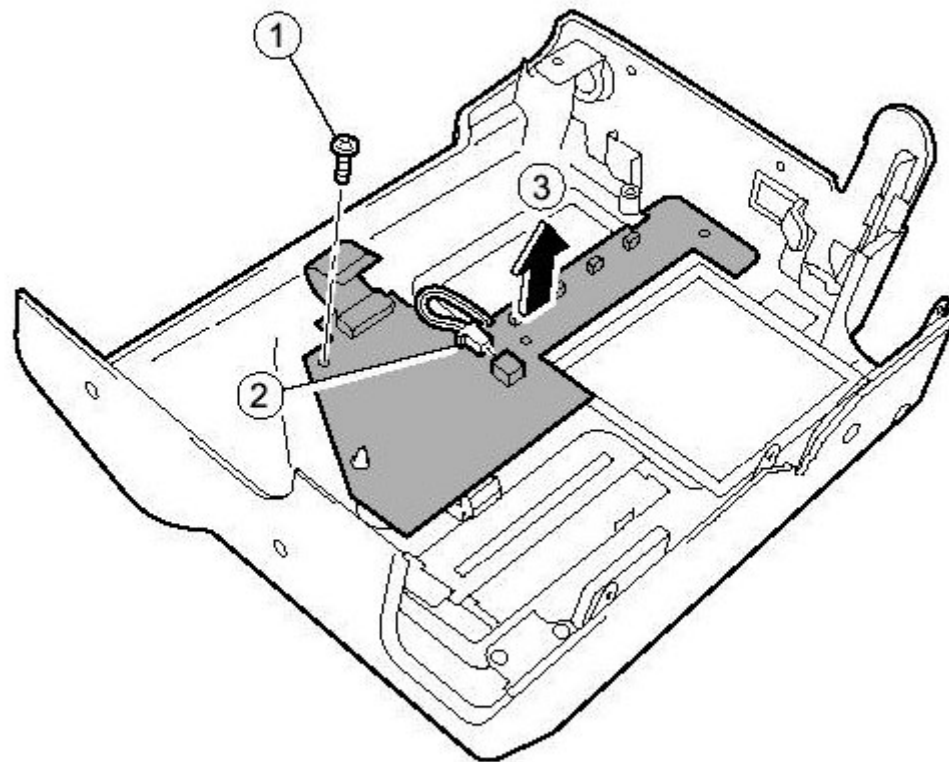


- (1) Remove two screws.
- (2) Remove REAR DISPLAY PANEL in the direction of the arrow.

## 2-9.Removing SW PWB ASSY

Remove in the order indicated by circled numbers.

<Step 1>

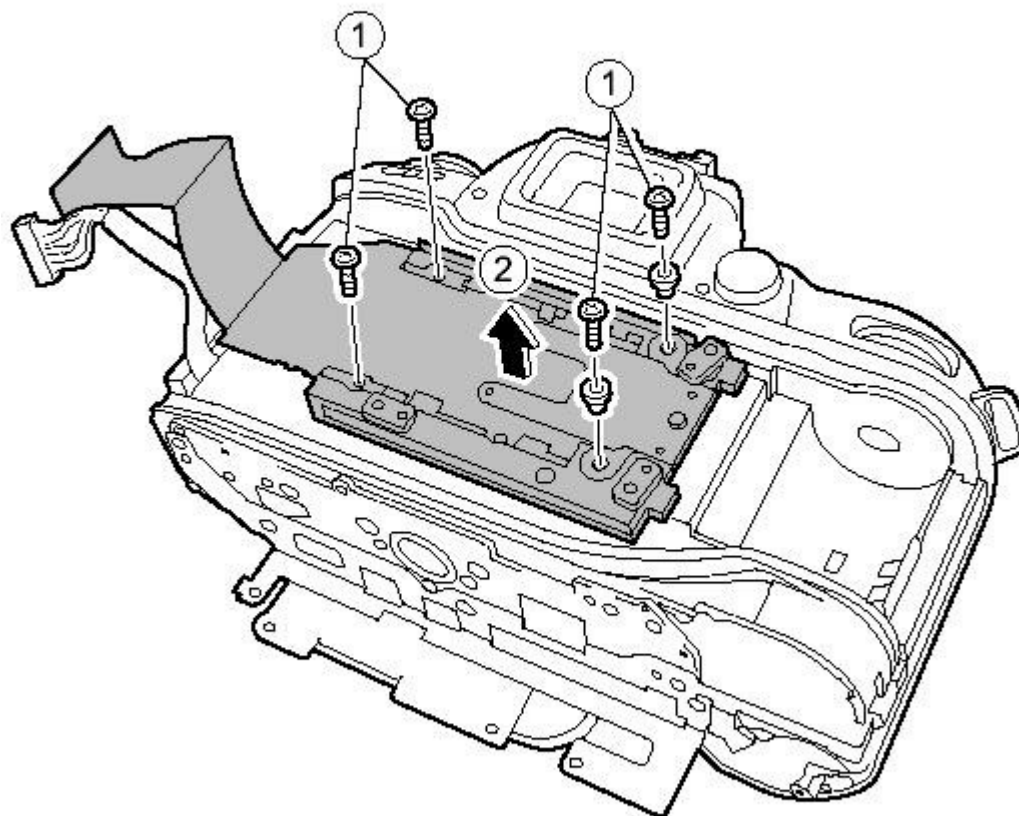


- (1) Remove one screws.
- (2) Remove the harness from connector (CN900) of SW PWB ASSY.
- (3) Remove SW PWB ASSY in the direction of the arrow.

## 2-10.Removing CCD HOLDER ASSY

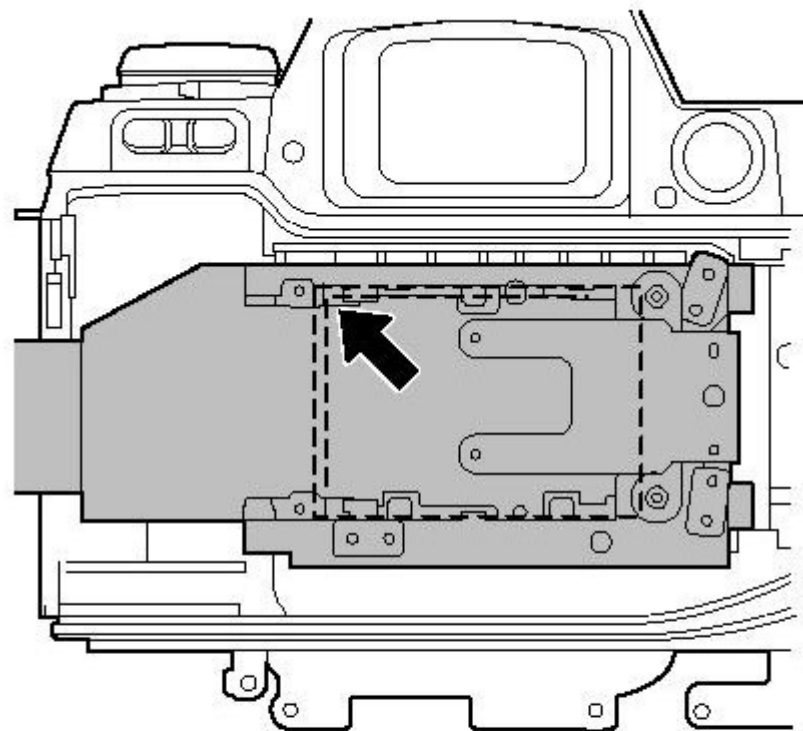
Remove in the order indicated by circled numbers.

<Step 1>



(1) Remove four screws.

(2) Remove CCD HOLDER ASSY in the direction of the arrow.



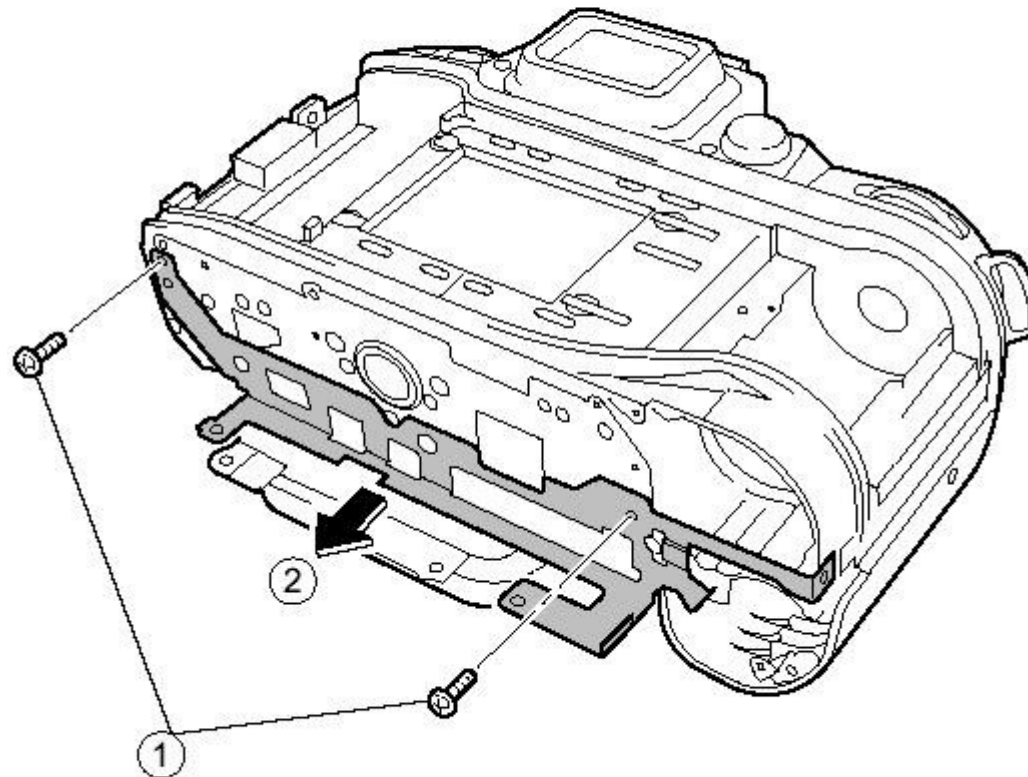
[ Notes of assembly of CCD HOLDER ASSY]

Tighten the machine screw according to one side  
(direction of the arrow) when you stop four screws.

## 2-11.Removing PLATE BOTTOM

Remove in the order indicated by circled numbers.

<Step 1>



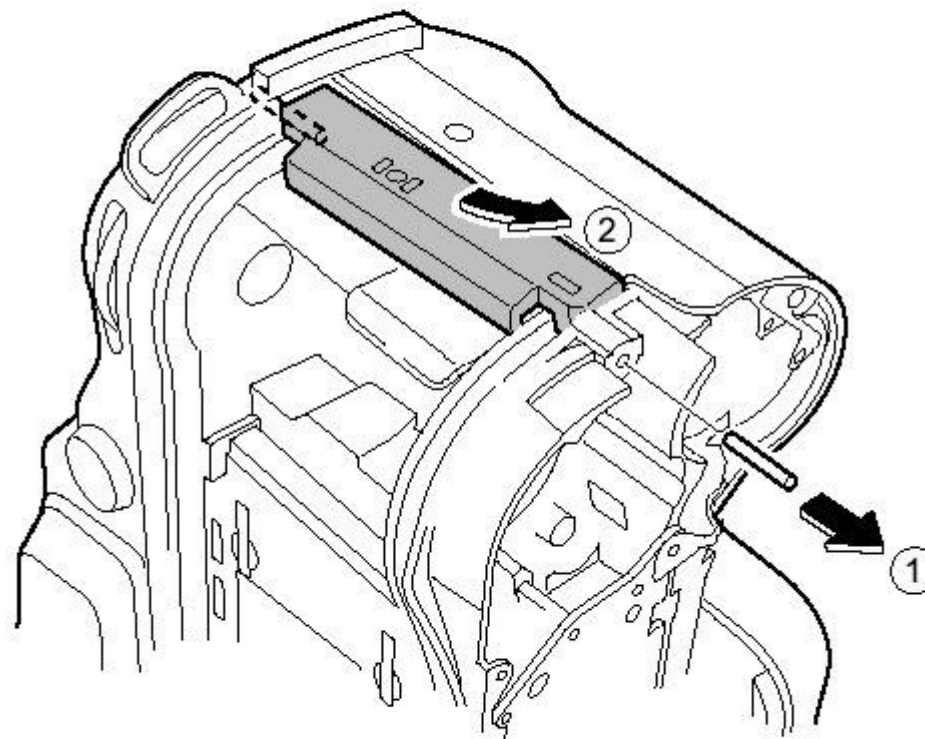
(1) Remove two screws.

(2) Remove PLATE BOTTOM in the direction of the arrow.

## 2-12.Removing GRIP BASE

Remove in the order indicated by circled numbers.

<Step 1>



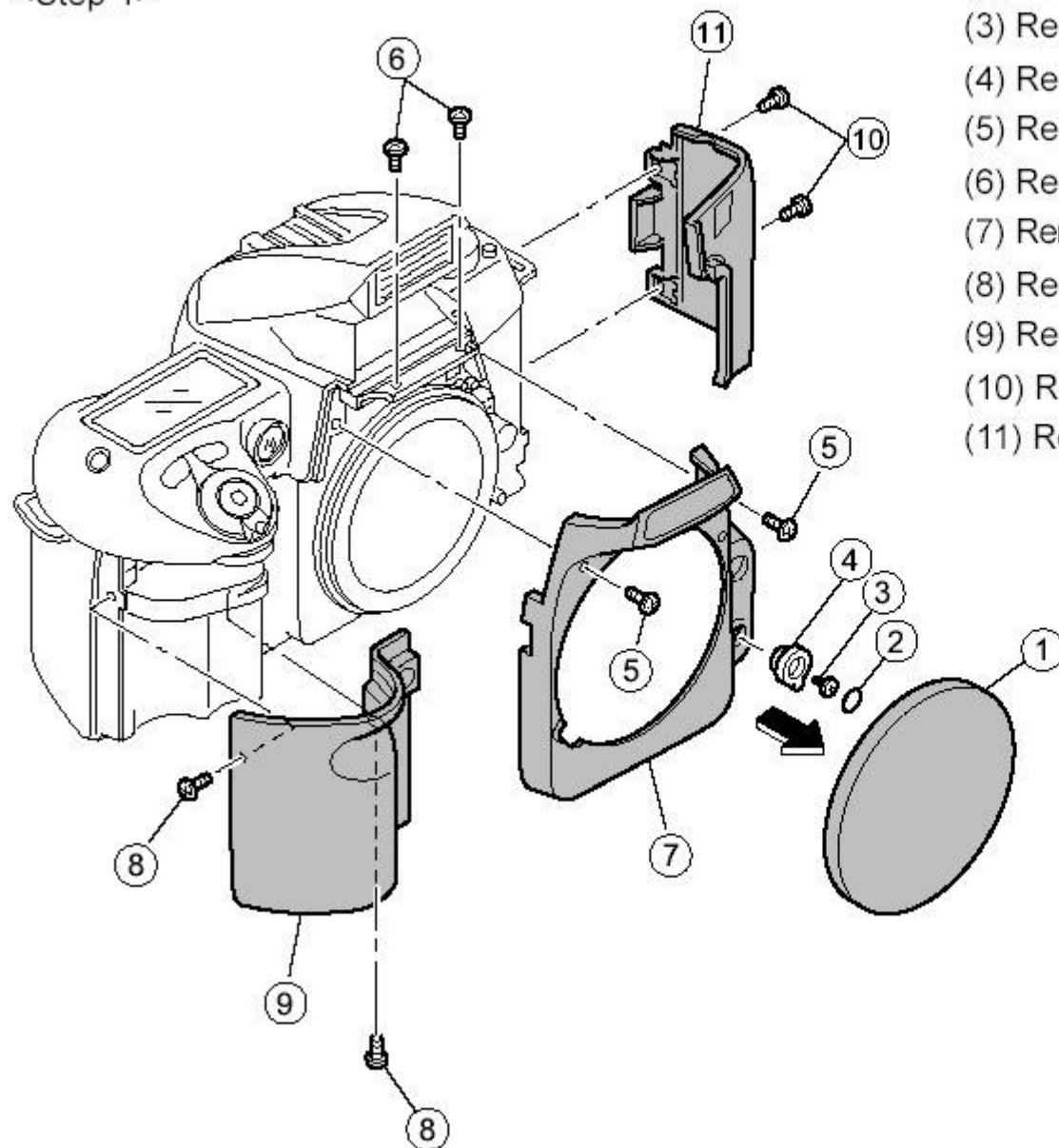
(1) Remove SHAFT.

(2) Remove GRIP BASE in the direction of the arrow.

## 2-13.Removing TOP COVER UNIT

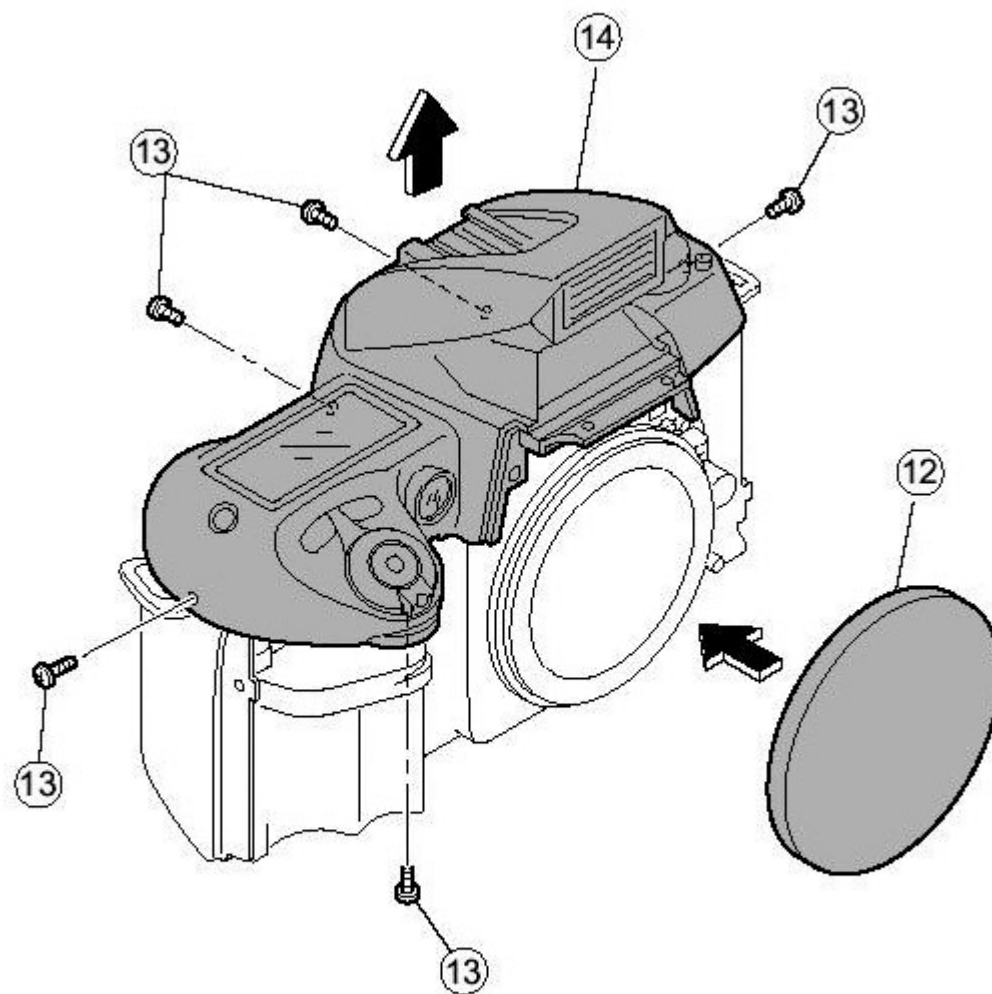
Remove in the order indicated by circled numbers.

<Step 1>



- (1) Remove the lens cap.
- (2) Remove A/M COVER PLATE.
- (3) Remove one screw.
- (4) Remove A/M CHANGE LEVER.
- (5) Remove two screws.
- (6) Remove two screws.
- (7) Remove FRONT COVER UNIT in the direction of the arrow.
- (8) Remove two screw.
- (9) Remove GLIP COVER in the direction of the arrow.
- (10) Remove two screws.
- (11) Remove SIDE COVER in the direction of the arrow.

<Step 2>



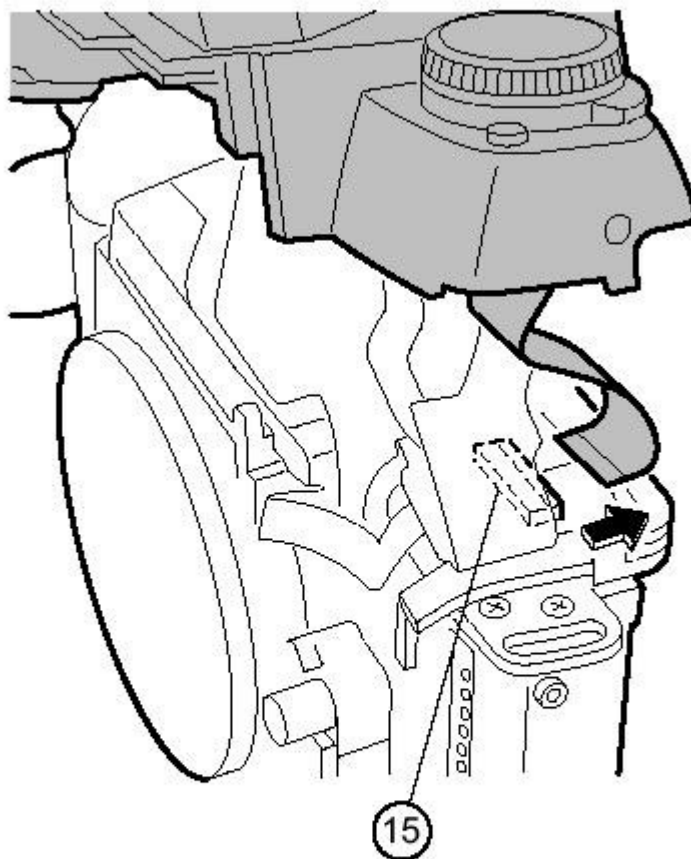
(12) Do the lens cap.

(13) Remove five screws.

(14) Float TOP COVER UNIT in the direction of the arrow.



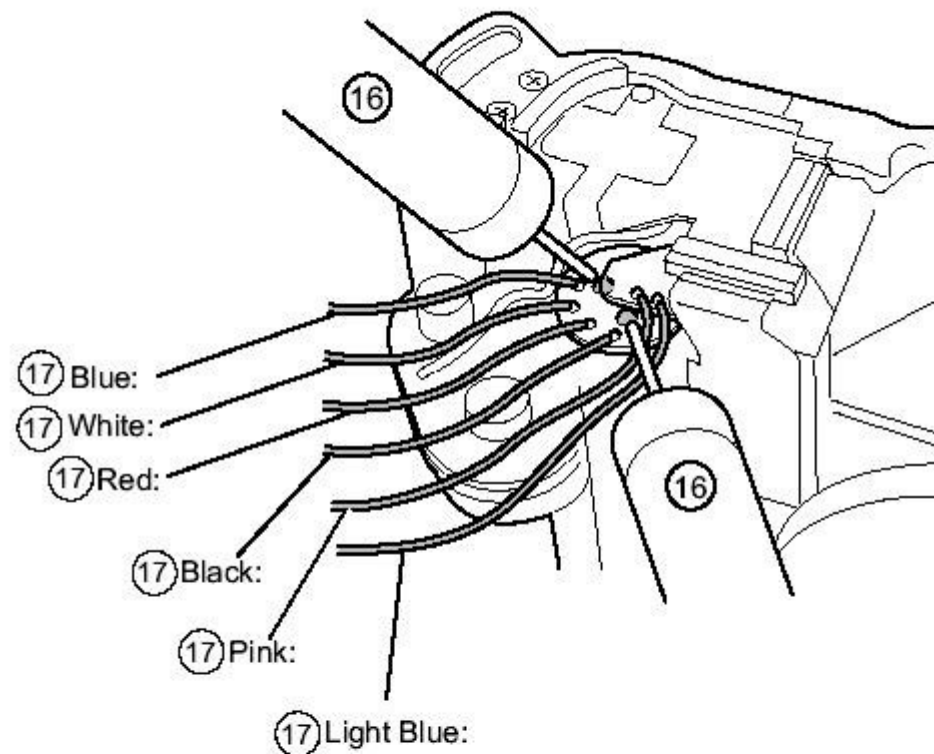
<Step 3>



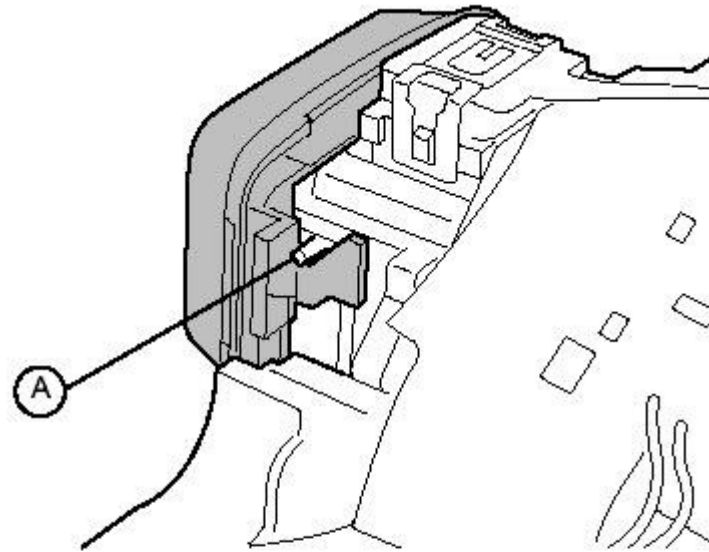
(15) Remove FPC from the TOP COVER side, and  
remove TOP COVER UNIT to the grip side.

\* As for the grip side, the harness is stopped with solder.

<Step 4>



- (16) Discharge electricity before removing the harness.
- (17) Remove six harness, and remove TOP COVER UNIT completely.

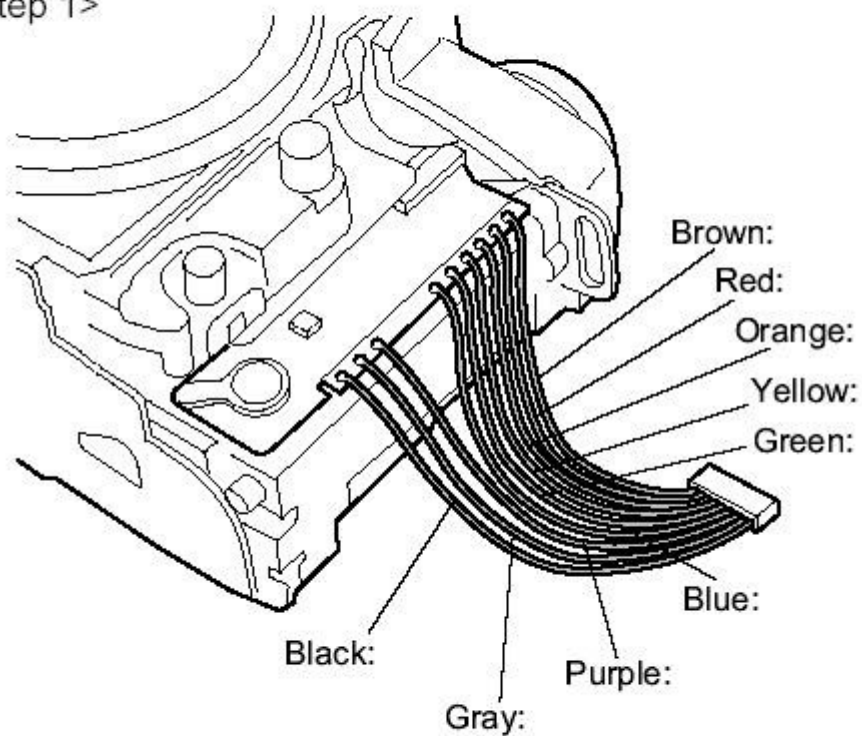


[ Notes of assembly of TOP COVER UNIT ]  
Hang part A inner EYE PIECE BARREL UNIT.  
And, build in TOP COVER UNIT.

## 2-14.Removing BODY FPC HARNESS

Remove in the order indicated by circled numbers.

<Step 1>

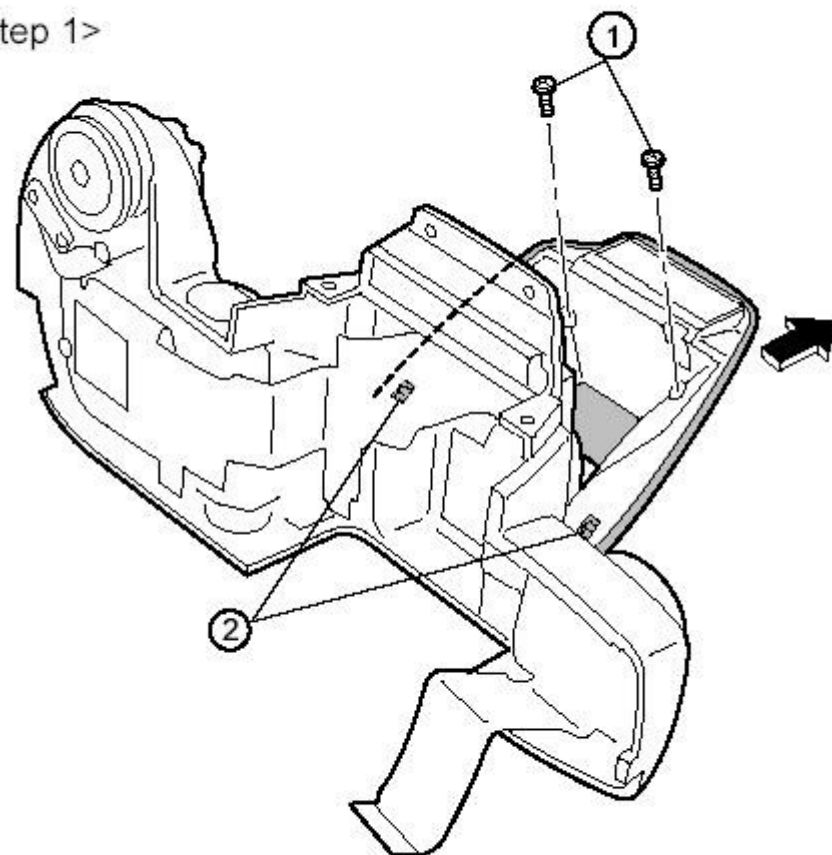


(1) Remove soldering from CAMERA BODY, and remove BODY FPC HARNESS.

## 2-15.Removing SB LOWER CASE UNIT

Remove in the order indicated by circled numbers.

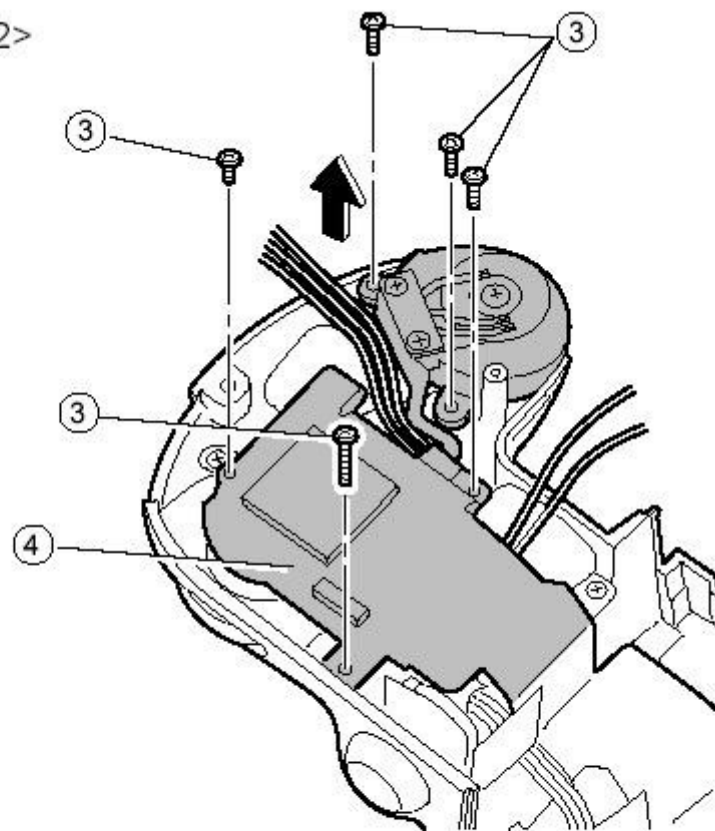
<Step 1>



(1) Remove two screws.

(2) Remove the hook in two places.

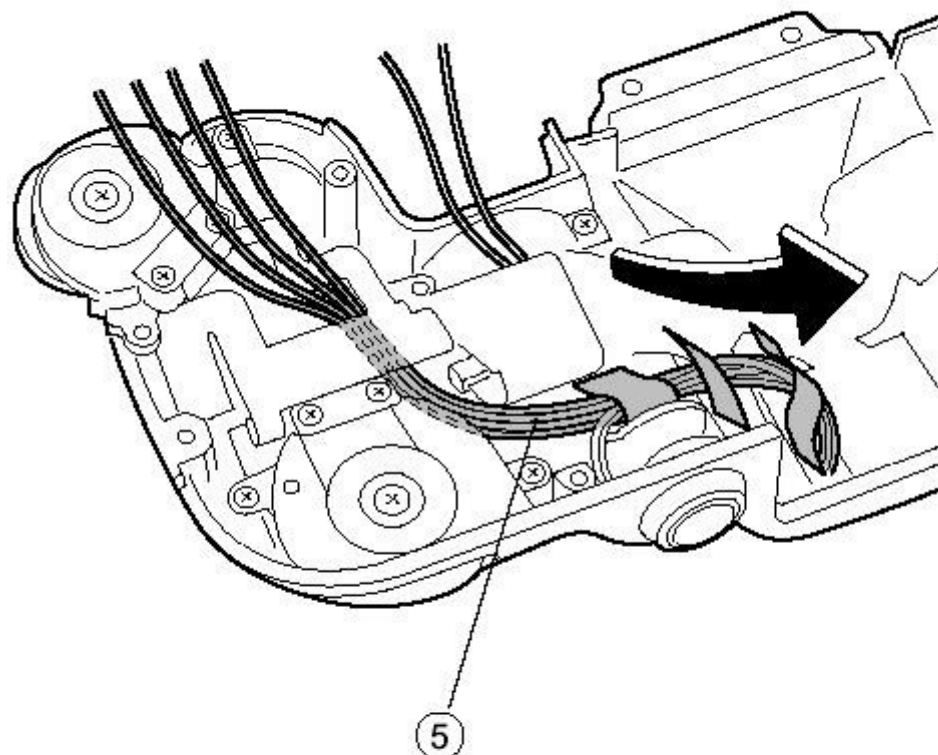
<Step 2>



(3) Remove two screws.

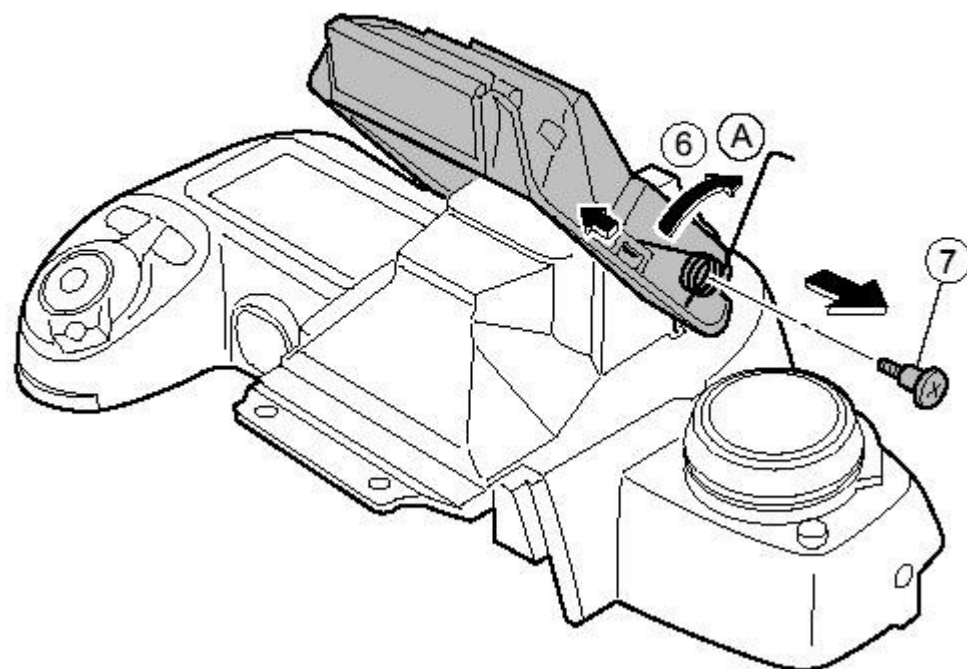
(4) Float TOP COVER FPC.

<Step 3>



(5) Pull out the harness of the flash in the direction of the arrow after floating TOP COVER FPC.

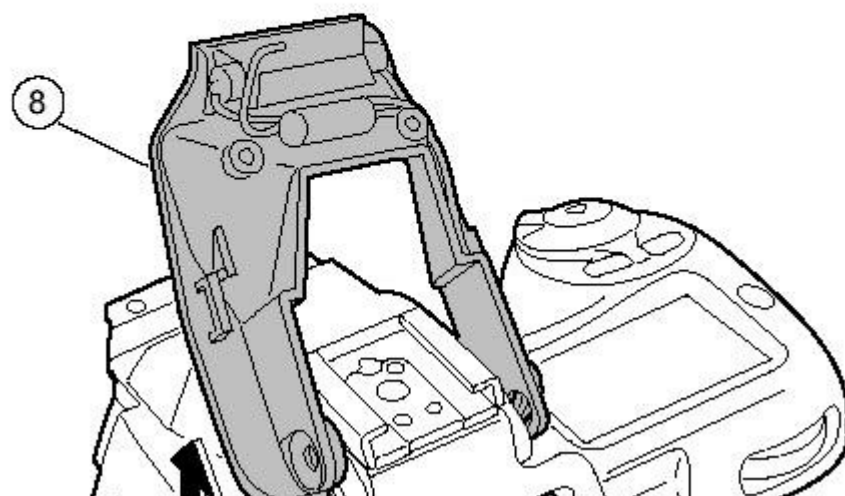
<Step 4>



(6) Remove FLASH UP SPRING in the direction of A.

(7) Remove one screws.

<Step 5>



(8) Remove SB LOWER CASE UNIT in the direction of the arrow.



---

**FUJI PHOTO FILM CO.,LTD.**

**Ref.No.:ZM00438-105**  
Printed in Japan 2002.06(T.S.)

---